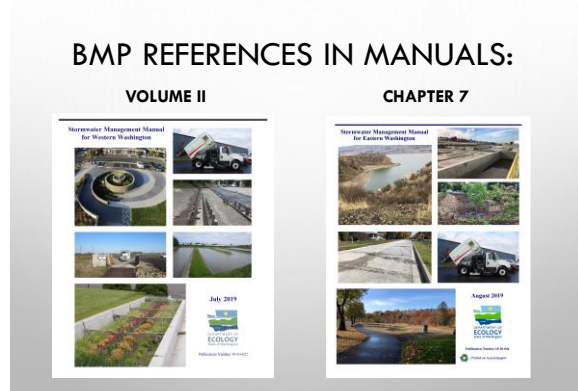




1



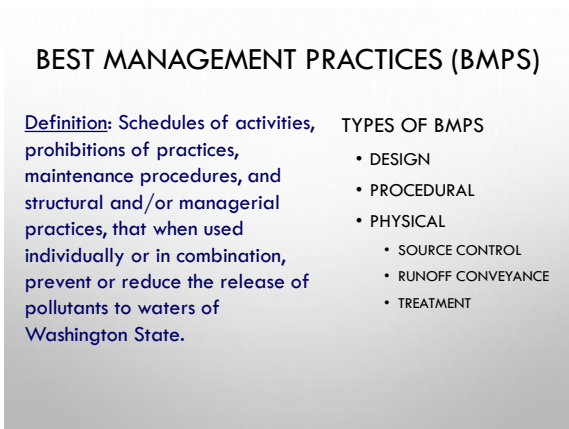
2



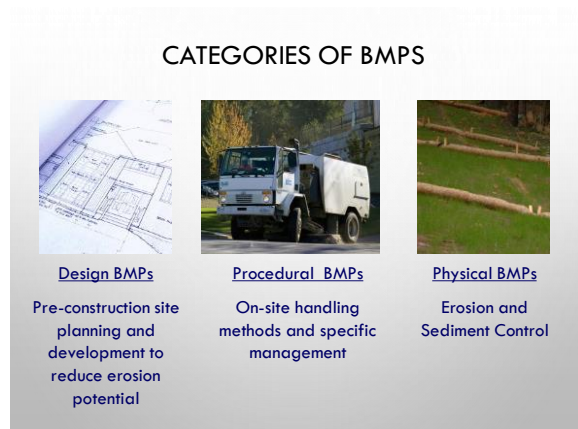
3



4



5



6

BMPs THAT SAVE YOU THE MOST MONEY!



DESIGN BMPs

- TAKE PLACE BEFORE ANY WORK IS DONE ON SITE
- ENGINEERS
 - CONTINGENCY SEDIMENT CONTROL PLAN
- SITE PLANS
 - MINIMIZE DISTURBANCE
 - VEGETATION CLEARING AND PRESERVATION
 - UTILIZE NATURAL CONTOURS
- KICK-OFF MEETINGS

7

DESIGN BMPs

- MINIMIZE DISTURBANCE (FOOTPRINT) OF PROJECT.
- MAXIMIZE INTEGRATION OF EXISTING LAND CONTOURS.
- MINIMIZE LENGTH AND GRADIENT OF SLOPES.
- ACCOUNT FOR BOTH ONSITE AND OFFSITE STORMWATER DURING CONSTRUCTION.
- MINIMIZE DISCHARGE POINTS.

8

GRADING AND EXCAVATION

GRADE TO YOUR ADVANTAGE



HYDROEXCAVATION



9

PROCEDURAL BMPs

Should be incorporated early in planning phases and throughout construction

- TIME MAJOR SOIL DISTURBANCE FOR DRY SEASON
- COMPLETE PROJECT IN PHASES
- INTEGRATE EROSION CONTROL AND CONSTRUCTION SCHEDULES (THEY DON'T HAVE TO CONFLICT)

10

PROCEDURAL BMPs



- PRE-CONSTRUCTION KICKOFF
- EDUCATION
- COMMON SENSE
 - DON'T MAKE A MESS!
 - PHASING AND TIMING
 - CLEAN UP AFTER YOURSELF!
 - SWEEPING
- COMMUNICATION

11



SCHEDULING SEASONAL AND WEEKLY ACTIVITY

12



13



FOOTBALL ANALOGY



- PLAYBOOK = SWPPP
- STARTERS = EVERYDAY ONSITE STAFF
- SPECIAL TEAMS = CONTRACTED SERVICES AND VENDORS

14



MATERIALS ON HAND

15



DELIVERY, STORAGE & CONTAINMENT

16

SECONDARY CONTAINMENT

NO SECONDARY CONTAINMENT



PROPER SECONDARY CONTAINMENT



17



PAYMENT OF EROSION CONTROL

18

DUST CONTROL

Uncontaminated or potable water used to control dust. Permittees must minimize the amount of dust control water used.



19

CONCRETE HANDLING



20

COVERING CONTAINMENT



21

CONCRETE WASHOUT

• S9.D.9.H (PAGE 34) – ASSURE THAT WASHOUT OF CONCRETE TRUCKS IS PERFORMED OFF-SITE OR IN DESIGNATED CONCRETE WASHOUT AREAS ONLY. DO NOT WASH OUT CONCRETE TRUCK DRUMS OR CONCRETE HANDLING EQUIPMENT ONTO THE GROUND, OR INTO STORM DRAINS, OPEN DITCHES, STREETS, OR STREAMS. WASHOUT OF CONCRETE HANDLING EQUIPMENT MAY BE DISPOSED OF IN A DESIGNATED CONCRETE WASHOUT AREA OR IN A FORMED AREA AWAITING CONCRETE WHERE IT WILL NOT CONTAMINATE SURFACE OR GROUND WATER. DO NOT DUMP EXCESS CONCRETE ON SITE, EXCEPT IN DESIGNATED CONCRETE WASHOUT AREAS. CONCRETE SPILLAGE OR CONCRETE DISCHARGE DIRECTLY TO GROUNDWATER OR SURFACE WATERS OF THE STATE IS PROHIBITED. DO NOT WASH OUT TO FORMED AREAS AWAITING LID FACILITIES.

22

SAWCUTTING AND SURFACE POLLUTION PREVENTION



Photos courtesy of Robert I. Carr, Ph.D., P.E.

23

VACUUMING SLURRY



24



PHYSICAL BMPS

- IMPLEMENTATION OF EROSION & SEDIMENT CONTROL PRACTICES TO THE SOIL
- MUST BE A SUPPLEMENT TO AND NOT A REPLACEMENT FOR DESIGN & PROCEDURAL BMPS.

25

MAINTAIN BMPS

- EVERY BMP HAS A MAINTENANCE ELEMENT
- CONSIDER THE COST
- REMOVE ALL TEMPORARY BMPS AT TIME OF NOT UNLESS BIO/PHOTO DEGRADABLE

BMP \$ =

- Purchase
- Installation
- Maintenance
- Disposal



26



27

EROSION CONTROL VS. SEDIMENT CONTROL



Erosion Control – prevention or minimization of soil erosion

PRIMARY METHOD



Sediment Control – recapture eroded soil before it leaves the construction site.

BACKUP OR SECONDARY METHOD

28

PHYSICAL BMPS

- SOURCE CONTROL
 - REDUCE EROSION
 - STABILIZE SOILS
 - SETTLE OUT SEDIMENTS
 - CREATE/MAINTAIN CONSTRUCTION SITE BOUNDARIES
 - MANAGE DISTURBED SOILS ON-SITE
- RUNOFF CONVEYANCE
 - CONTROL FLOW OF WATER ON-SITE
 - ALLOW SEDIMENTS TO SETTLE
 - MANAGE WATER LEAVING SITE
- TREATMENT
 - PASSIVE AND ACTIVE

29

BMPS WORK TO...

- SOAK IT IN (MULCH & SEED)
- SPREAD IT AROUND (SHEET-FLOW)
- SLOW IT DOWN (ROUGHENED SURFACE & CHECK DAMS)
- SIFT IT OUT (PERIMETER BARRIERS)
- SETTLE IT OUT (TRAPS & BASINS)

30

BMP or Element Name	Element #1 Preserve Vegetation/Mark Clearing Limits	Element #2 Establish Construction Access	Element #3 Stabilize Soils	Element #4 Protect Slopes	Element #5 Control Pollutants	Element #6 Maintain BMPs	Element #7 Manage the Project	Element #8 Prevent Low Impact Disturbance
BMP C101: Preserving Natural Vegetation	✓							
BMP C102: Buffer Zones	✓							✓
BMP C103: High Visibility Plastic or Metal Fence	✓							✓
BMP C105: Stabilized Construction Entrance / Exit		✓						
BMP C106: Wheel Wash			✓					
BMP C107: Construction Road/Parking Area Stabilization		✓						
BMP C109: Temporary and Permanent Seeding			✓	✓				
BMP C121: Mulching			✓					
BMP C122: Nets and Blankets			✓					
BMP C123: Plastic Covering			✓					
BMP C124: Sodding			✓					
BMP C125: Topsoiling / Composting			✓					

SOURCE CONTROL BMPs BY SWPPP ELEMENT

31



PRESERVING NATURAL VEGETATION

32



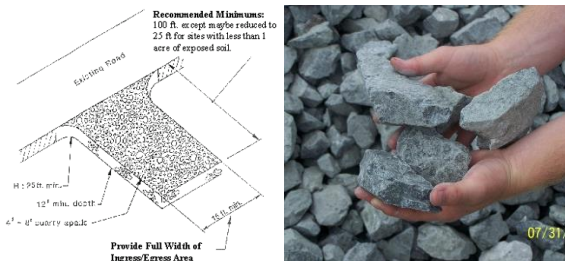
BUFFER ZONES

33



HIGH VISIBILITY PLASTIC OR METAL FENCE

34



STABILIZED CONSTRUCTION ENTRANCE

35



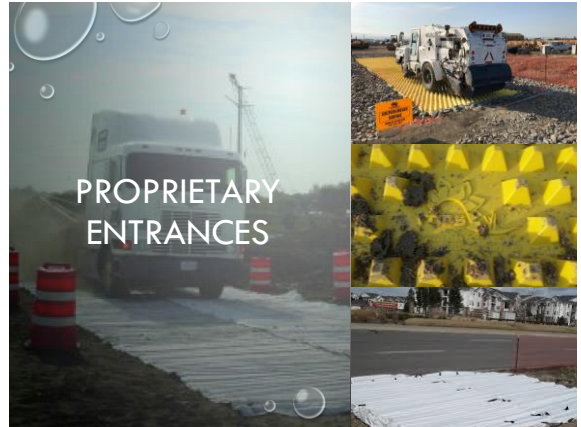
STABILIZED CONSTRUCTION ENTRANCE
- RUMBLE STRIP

36



STABILIZED CONSTRUCTION ENTRANCE -WHEEL WASH

37



PROPRIETARY ENTRANCES

38

MUD MAT ENTRANCE

- **Instant** construction entrance
- Mats 8' x 15' at 90#
- Roll up
- Easy top clean
- Track pad for 'swampy' soil

Soil/Water, Reinforcing Members, Reinforcing Members, Layer of fabric or mesh, Layer of fabric or mesh, Fabric or mesh, Easy to clean or clipped that to combine reinforcing members (not shown)

39

FODS ENTRANCE

- **INSTANT** CONSTRUCTION ENTRANCE
- PANELS 7' X 12' AT 430#
- EASILY TRANSPORTED
- VISIBLE YELLOW
- MADE IN THE USA
- REUSED AGAIN AND AGAIN
- 50,000LBS CRUSH RATING PER DIMPLE

40

ROAD/PARKING AREA STABILIZATION

41

STABILIZE SOILS

UNSTABILIZED STORAGE AREA

STABILIZED STORAGE AREA

42



QUICK BREAK

43